



Goochland Co, VA. ...photo Courtesy Fire Chief William MacKay

National Facts/Points

As of 1630, 30 April, National Weather Service has confirmed 14
tornadoes. STATE WIDE

1 – EF3, 3 – EF2, 7 – EF1 and 3 – EF0.

EF3 – Washington County, Glade Spring area; length – 18 miles; width –
three quarters of a mile (.75)

EF2 – Rockingham County, St. Luke area/Shenandoah County, Fulks Run
area; length – 33 miles; width – 400 yards

EF2 – Halifax County, town of Halifax area; length – 13.4 miles; width –

350 yards

EF2 – Smyth County, Chilhowie area; length – 2.8 miles; width – half a mile (.5)

EF1 – Rockingham County, Keezletown area; length – 1.8 miles; width – 150 yards

EF1 – Rockingham County, Linville area; length - .9 miles; width – 50 yards

EF1 – Prince Edward County, Farmville area/Cumberland County; length – 5.5 miles; width – 100 yards

EF1 – Caroline County, Carmel Church area; length – 1 mile; width – 100 yards

EF1 – Augusta County, Churchville area; length – 4 miles; width – 150 yards

EF1 – Goochland County, Oilville area; length – 2 miles; width – 100 yards

EF1 – Hanover County, Coatesville area; length – 2 miles; width – 100 to 150 yards

EF0 – Prince William County, Nokesville area; length – half a mile (.5); width – 75 yards

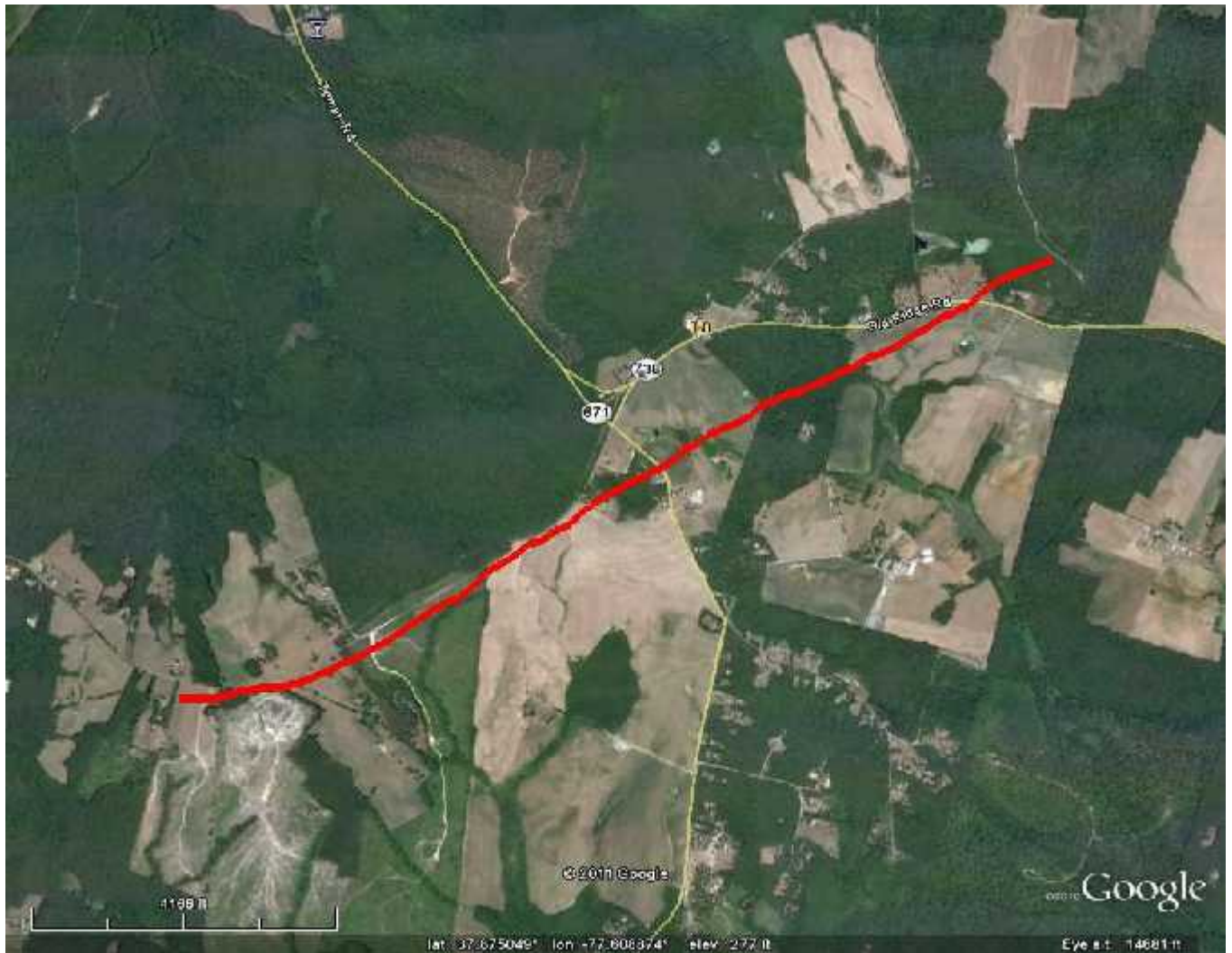
EF0 – Shenandoah County, Strasburg area/Frederick County, Middletown area; length – 4.3 miles; width – 175 yards

EF0 – Washington County, Abingdon area; length – 2 miles; width – 50 yards

[For Blackburg, VA Storm Summary.....Sterling , VA Storm Summary....Morristown, TN Survey](#)

In the Wakefield (AKQ) county warning area the following were damage paths:

EF1 – Hanover County, Coatesville area; length – 2 miles; width – 100 to 150 yards



...HANOVER COUNTY TORNADO SURVEY RESULTS...

LOCATION...OLD RIDGE ROAD /4 MILES SOUTH OF
BEAVERDAM/

DATE...APR 28 2011

ESTIMATED TIME...1015 AM TO 1020 AM

EF-SCALE RATING...EF1 /LOW END/

ESTIMATED WIND SPEED...86 TO 110 MPH

PATH WIDTH...100 TO 150 YARDS WIDE

PATH LENGTH...2.5 MILES

INJURIES...0

DEATHS...0

...SUMMARY...

NWS STORM SURVEY DETERMINED THE DAMAGE WAS
CONSISTENT WITH A LOW END

EF1 TORNADO. THE TORNADO PARALLELED OLD RIDGE ROAD
FOR 1.5 MILES

BEFORE CROSSING COATESVILLE ROAD...THEN TRACKED
NORTHEAST

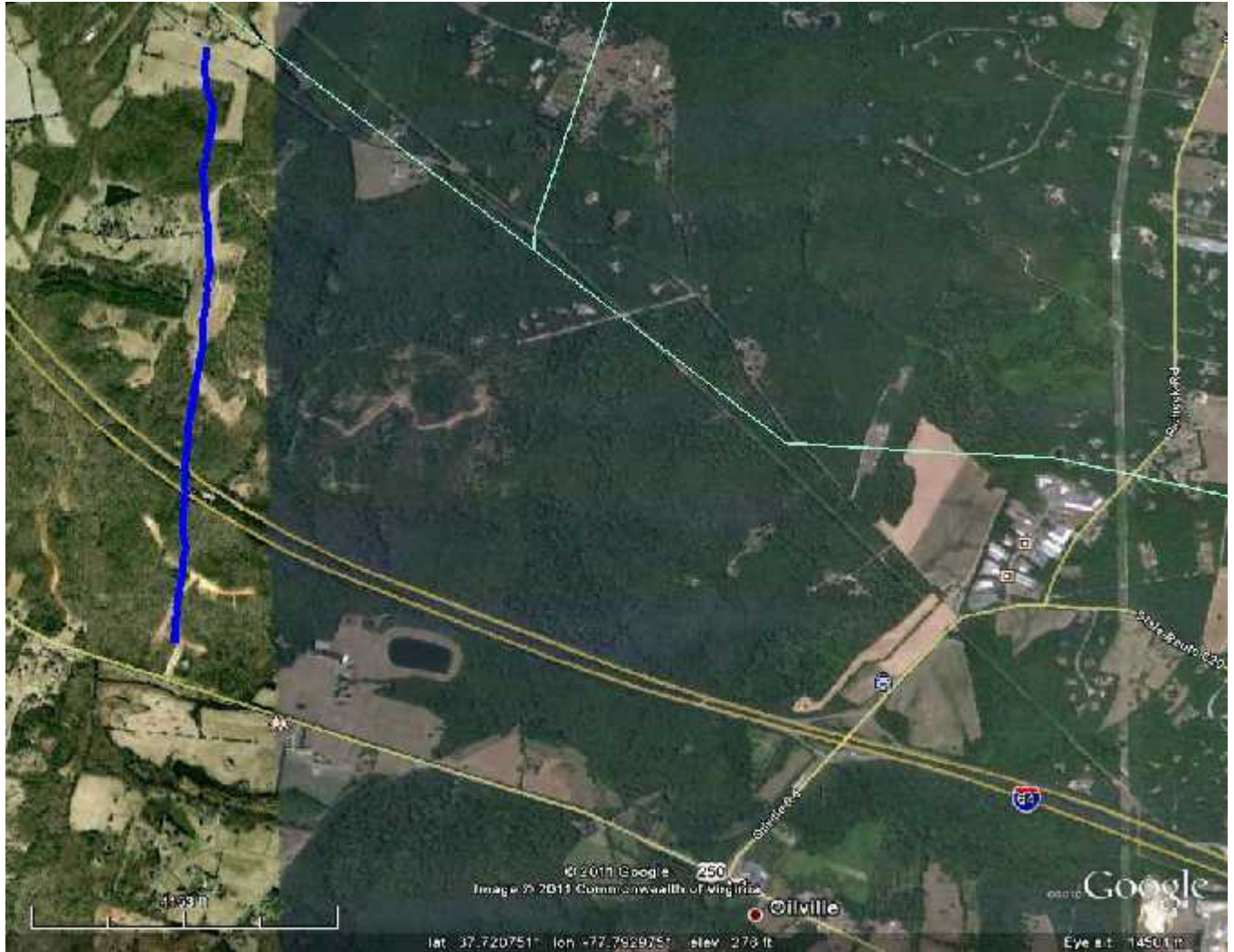
APPROXIMATELY 1 MILE AND CROSSED OLD RIDGE ROAD.

NUMEROUS TREES WERE

DOWNED OR SHEARED OFF. A SINGLE TREE FELL ON A HOUSE
ON OLD RIDGE

ROAD CAUSING MINOR ROOF DAMAGE.

EF1 – Goochland County, Oilville area; length – 2 miles; width
– 100 yards



...GOOCHLAND COUNTY SURVEY RESULTS...

LOCATION...BRIDGEWATER BLUFF /2 MILES WEST OF OILVILLE/
DATE...APR 27 2011
ESTIMATED TIME...725 PM TO 730 PM

EF-SCALE RATING...EF1 /LOW END/
ESTIMATED WIND SPEED...86 TO 110 MPH
PATH WIDTH...100 YARDS WIDE
PATH LENGTH...2 MILES
INJURIES...0
DEATHS...0

...SUMMARY...

NWS STORM SURVEY DETERMINED THE DAMAGE WAS
CONSISTENT WITH A LOW END
EF1 TORNADO. THE TORNADO TRACKED FROM BRIDGEWATER
BLUFF TO PONY FARM
ROAD...CROSSING INTERSTATE 64. NUMEROUS TREES WERE
DOWNED OR SHEARED
OFF. THE TORNADO HAD A PATH WIDTH OF APPROXIMATELY
100 YARDS.

EF1 – Caroline County, Carmel Church area; length – 1 mile;
width – 100 yards



...CAROLINE COUNTY TORNADO SURVEY RESULTS...

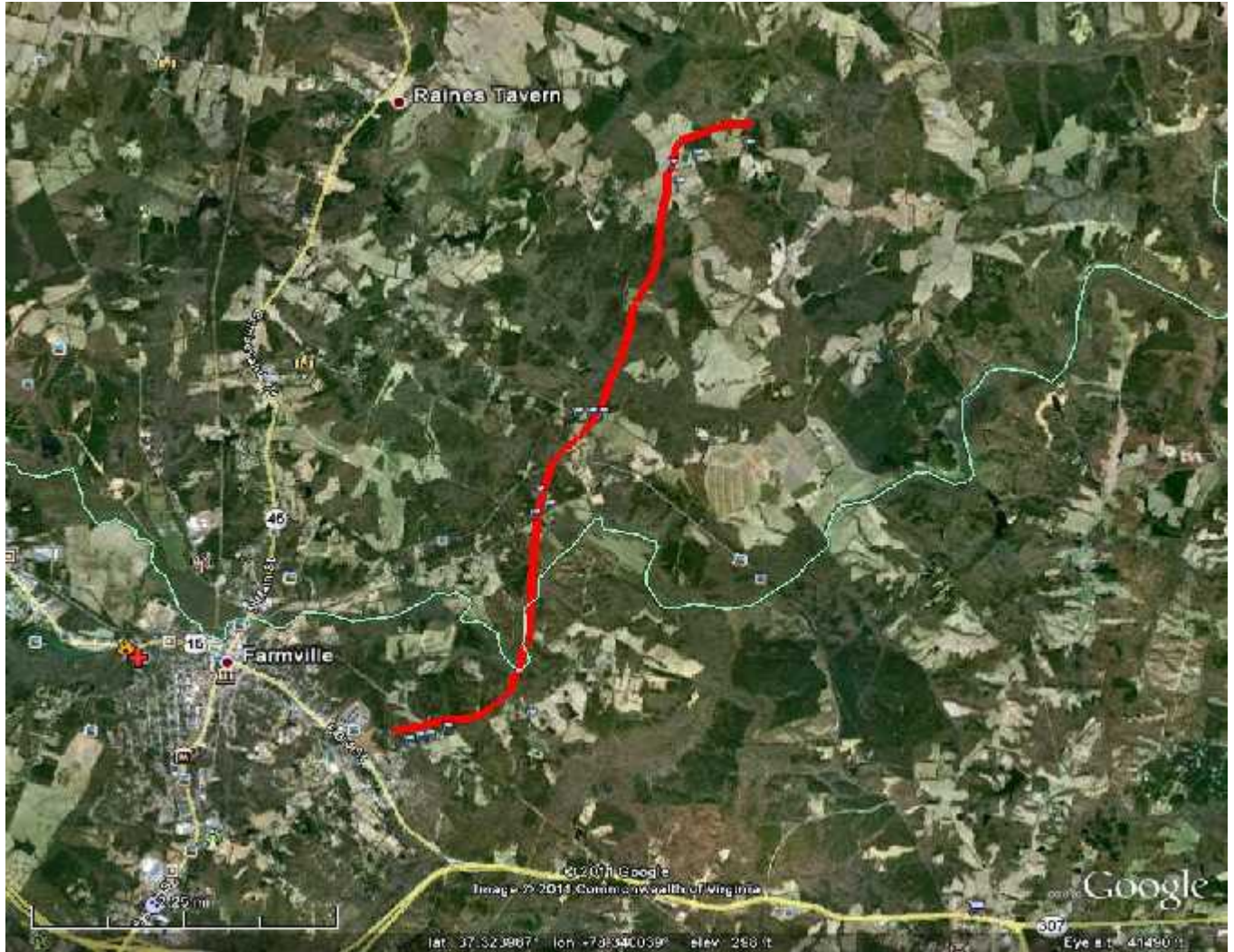
LOCATION...WEST OF CARMEL CHURCH
DATE...APR 27 2011
ESTIMATED TIME...855 PM TO 900 PM

EF-SCALE RATING...EF1
ESTIMATED WIND SPEED...86 TO 110 MPH
PATH WIDTH...100 YARDS WIDE
PATH LENGTH...1 MILE
INJURIES...0
DEATHS...0

...SUMMARY...

NWS STORM SURVEY DETERMINED THE DAMAGE WAS
CONSISTENT WITH AN EF1
TORNADO. THE TORNADO CROSSED JERICHO
ROAD...APPROXIMATELY 2.5 MILES
WEST OF THE TOWN OF CARMEL CHURCH. NUMEROUS TREES
WERE DOWNED OR
SHEARED OFF. THE TORNADO HAD A PATH WIDTH OF
APPROXIMATELY 100 YARDS.

EF1 – Prince Edward County, Farmville area/Cumberland
County; length – 5.5 miles; width – 100 yards



...PRINCE EDWARD/CUMBERLAND COUNTY SURVEY RESULTS...

LOCATION...JUST EAST OF FARMVILLE TO 5.5 MILES NNE OF FARMVILLE

DATE...APR 27 2011

ESTIMATED TIME...655 PM TO 705 PM
EF-SCALE RATING...EF1 /LOW END/
ESTIMATED WIND SPEED...86 TO 110 MPH
PATH WIDTH...100 YARDS WIDE
PATH LENGTH...5.5 MILES
INJURIES...0
DEATHS...0

...SUMMARY...

NWS STORM SURVEY DETERMINED THE DAMAGE WAS
CONSISTENT WITH A LOW END
EF1 TORNADO. THE TORNADO STARTED ABOUT 1.5 MILES EAST
OF
FARMVILLE...THEN TRACKED NORTH-NORTHEASTWARD FOR
ABOUT 5.5 MILES
INTO SOUTHEAST CUMBERLAND COUNTY. NUMEROUS TREES
WERE DOWN AND
SNAPPED OFF. SEVERAL HOMES ON RIVER ROAD SUSTAINED
DAMAGE...MAINLY
TO ROOFS.

SAS