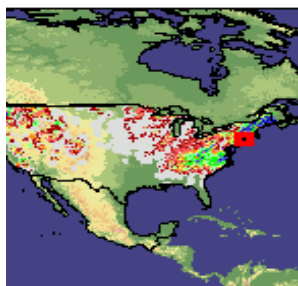
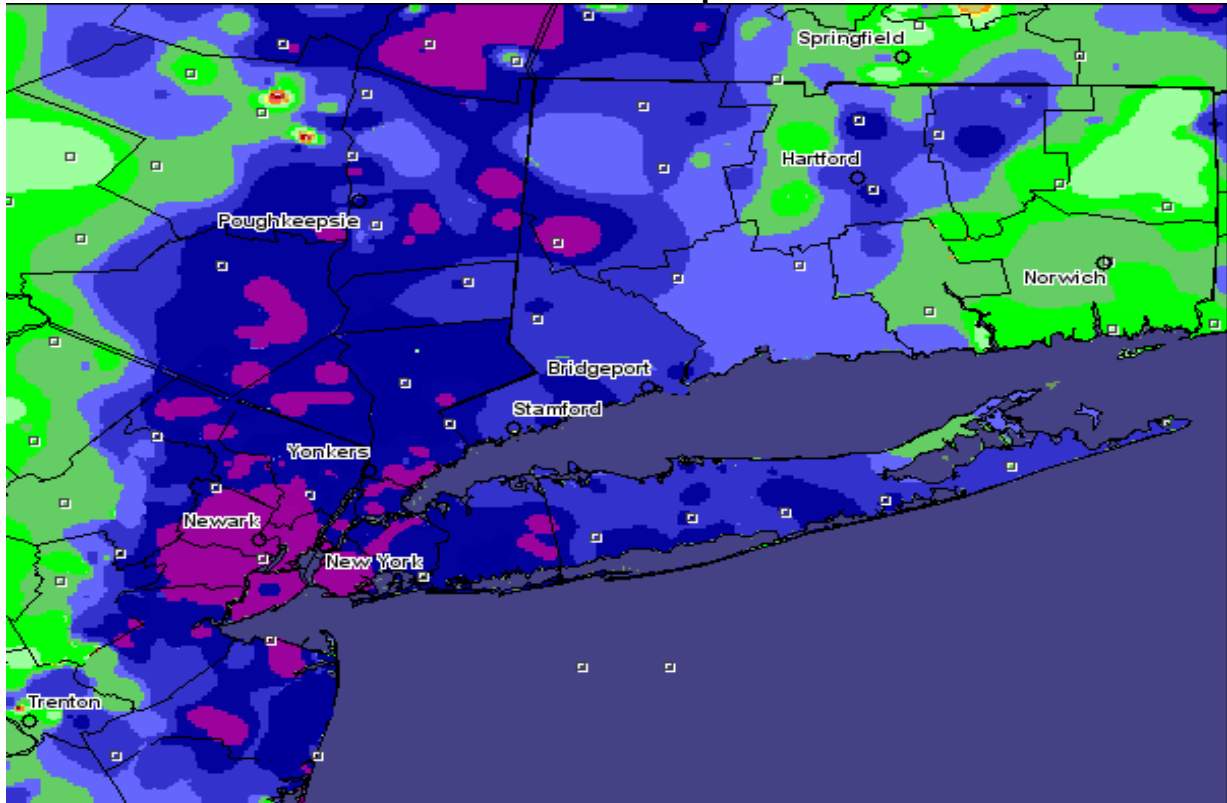


The Meteorology of the Event

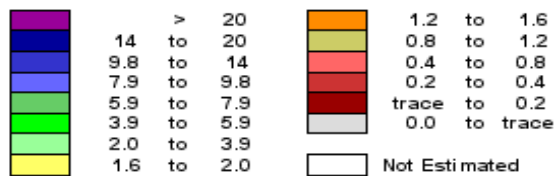
Snowfall Records for 1-Day, 2-Days, and 3-Days

Snowfall Map

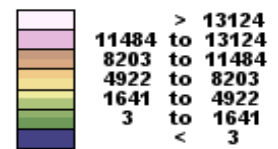


161.0 mi

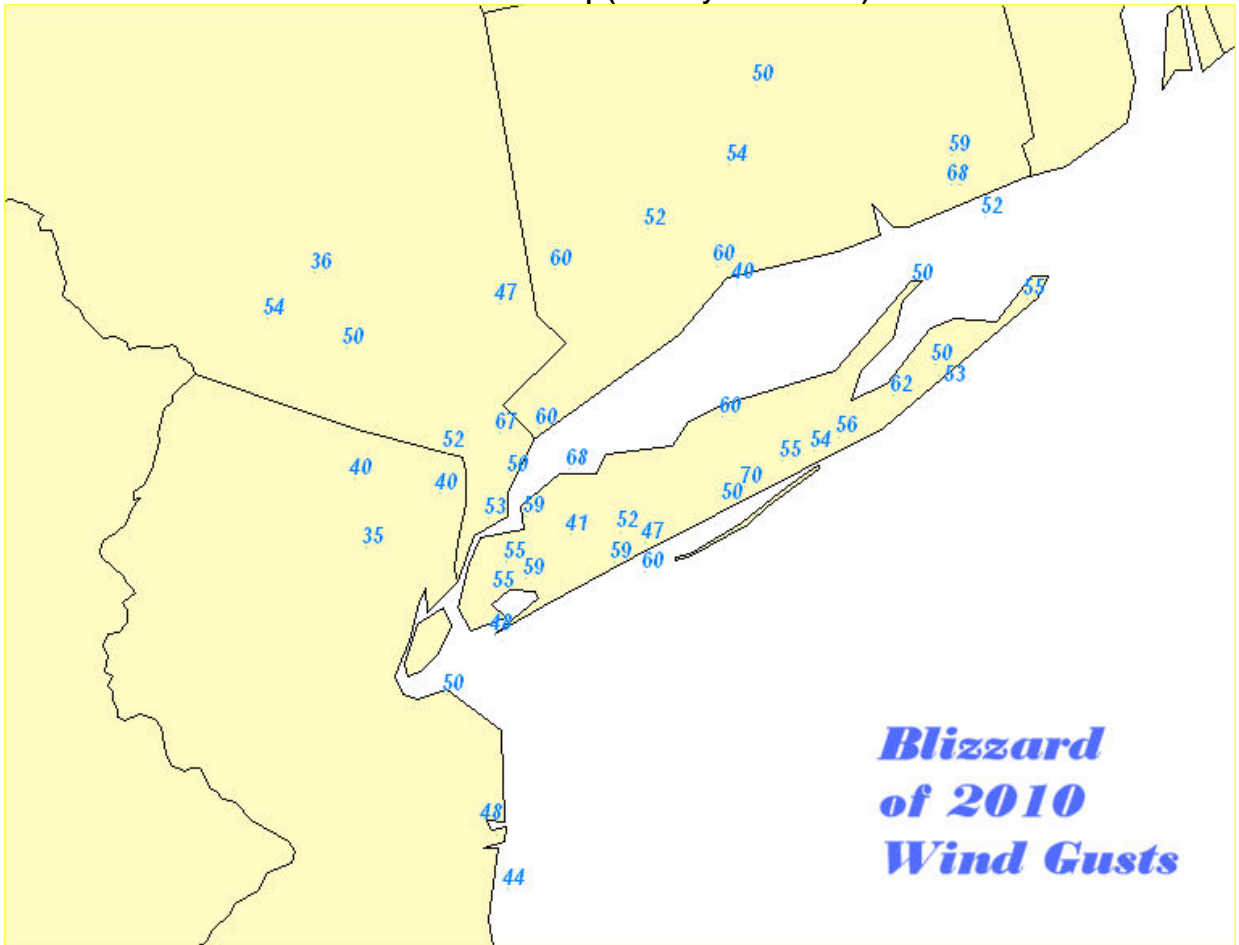
Inches of depth



Elevation in feet (Not estimated)



Peak Wind Gust Map (courtesy of WFO CTP)



000
 NOUS41 KOKX 280631
 PNSOKX
 CTZ005>012-NJZ002-004-006-103>108-NYZ067>075-078>081-
 176>179-282100-

PUBLIC INFORMATION STATEMENT
 SPOTTER REPORTS
 NATIONAL WEATHER SERVICE NEW YORK NY
 128 AM EST TUE DEC 28 2010

THE FOLLOWING ARE UNOFFICIAL OBSERVATIONS TAKEN
 DURING THE PAST 29 HOURS
 FOR THE STORM THAT HAS BEEN AFFECTING OUR REGION.
 APPRECIATION IS EXTENDED
 TO HIGHWAY DEPARTMENTS...COOPERATIVE
 OBSERVERS...SKYWARN SPOTTERS
 AND MEDIA FOR THESE REPORTS. THIS SUMMARY IS ALSO
 AVAILABLE ON OUR
 HOME PAGE AT WEATHER.GOV/NYC

*****STORM TOTAL SNOWFALL*****

LOCATION	STORM TOTAL SNOWFALL /INCHES/	TIME/DATE OF MEASUREMENT	COMMENTS
----------	-------------------------------------	--------------------------------	----------

CONNECTICUT

...FAIRFIELD COUNTY...

WILTON 18.0 830 AM 12/27 PUBLIC
NEW CANAAN 17.5 815 PM 12/27 CT DOT
GREENWICH 17.0 700 AM 12/27 PUBLIC
STRATFORD 16.0 1000 AM 12/27 PUBLIC
NORWALK 16.0 910 AM 12/27 PUBLIC
WESTPORT 14.8 145 PM 12/27 TRAINED SPOTTER
DARIEN 14.5 814 PM 12/27 CT DOT
DANBURY 14.1 800 AM 12/27 CO-OP OBSERVER
BRIDGEPORT 12.0 900 AM 12/27 CO-OP OBSERVER

...MIDDLESEX COUNTY...

WESTBROOK 9.5 1020 AM 12/27 PUBLIC
OLD SAYBROOK 7.0 813 PM 12/27 CT DOT
EAST HADDAM 6.5 1200 PM 12/27 PUBLIC

...NEW HAVEN COUNTY...

MILFORD 14.0 814 PM 12/27 CT DOT
BEACON FALLS 13.5 817 PM 12/27 CT DOT
NEW HAVEN 13.0 815 PM 12/27 CT DOT
SOUTHBURY 12.0 818 PM 12/27 CT DOT
WATERBURY 9.8 818 PM 12/27 CT DOT
MERIDEN 8.8 1030 AM 12/27 PUBLIC

...NEW LONDON COUNTY...

GALES FERRY 7.5 913 AM 12/27 TRAINED SPOTTER
1 NNE NEWENT 7.5 1151 AM 12/27 TRAINED SPOTTER
NORWICH 6.5 813 PM 12/27 CT DOT
COLCHESTER 6.5 812 PM 12/27 CT DOT
GROTON 6.5 812 PM 12/27 CT DOT
LEDYARD CENTER 5.0 730 AM 12/27 TRAINED SPOTTER

NEW JERSEY

...BERGEN COUNTY...

LYNDHURST 29.0 230 AM 12/27 TRAINED SPOTTER
LODI 27.1 700 AM 12/27 PUBLIC
RUTHERFORD 23.0 800 AM 12/27 NJ DEPT OF
HIGHWAYS
OAKLAND 22.0 730 AM 12/27 PUBLIC
GARFIELD 21.8 331 AM 12/27 TRAINED SPOTTER
BERGENFIELD 20.4 200 PM 12/27 TRAINED SPOTTER
GLEN ROCK 18.0 1030 AM 12/27 PUBLIC
RIDGEWOOD 17.5 622 AM 12/27 TRAINED SPOTTER
PARAMUS 17.0 800 AM 12/27 NJ DEPT OF HIGHWAYS
RIVERVALE 14.0 930 AM 12/27 PUBLIC

...ESSEX COUNTY...

BELLEVILLE 24.8 1030 AM 12/27 PUBLIC
NEWARK AIRPORT 24.2 700 AM 12/27 FAA CONTRACT
OBSERVER
BLOOMFIELD 24.0 945 AM 12/27 PUBLIC
WEST ORANGE 24.0 800 AM 12/27 PUBLIC
VERONA 23.0 500 AM 12/27 PUBLIC
MILLBURN 22.5 800 AM 12/27 PUBLIC
CEDAR GROVE 21.1 700 AM 12/27 PUBLIC

...HUDSON COUNTY...

JERSEY CITY 26.0 955 AM 12/27 TRAINED SPOTTER
HARRISON 25.0 415 AM 12/27 CO-OP OBSERVER
SECAUCUS 25.0 800 AM 12/27
KEARNY 20.0 800 AM 12/27 PUBLIC

HOBOKEN 19.9 800 AM 12/27

...PASSAIC COUNTY...

CLIFTON 25.5 215 PM 12/27 TRAINED SPOTTER
HASKELL 24.5 200 AM 12/27 TRAINED SPOTTER
WAYNE 22.0 915 AM 12/27 TRAINED SPOTTER
RINGWOOD 22.0 810 AM 12/27 PUBLIC
WEST MILFORD 22.0 415 AM 12/27 TRAINED SPOTTER

...UNION COUNTY...

RAHWAY 32.0 1000 AM 12/27 PUBLIC
ELIZABETH 31.8 700 AM 12/27 TRAINED SPOTTER
ROSELLE 28.7 710 AM 12/27 TRAINED SPOTTER
UNION 27.0 745 AM 12/27 TRAINED SPOTTER
CLARK 27.0 745 AM 12/27 PUBLIC
FANWOOD 26.0 100 AM 12/27 PUBLIC
GARWOOD 25.0 845 AM 12/27 PUBLIC
ROSELLE PARK 21.0 1230 AM 12/27 PUBLIC
PLAINFIELD 18.0 900 AM 12/27 TRAINED SPOTTER

NEW YORK

...BRONX COUNTY...

BEDFORD PARK 23.7 830 AM 12/27 PUBLIC
SOUNDVIEW PARK HOMES 22.5 800 AM 12/27 TRAINED SPOTTER
BRONX 20.9 1200 PM 12/27 PUBLIC - BRONX ZOO
WEST FARMS 20.5 1000 AM 12/27 PUBLIC
EASTCHESTER 20.0 925 AM 12/27 PUBLIC
RIVERDALE 19.4 840 AM 12/27 PUBLIC
PELHAM BAY 17.2 840 AM 12/27 PUBLIC
EAST TREMONT 16.0 800 AM 12/27 PUBLIC
PARKCHESTER 15.7 840 AM 12/27 TRAINED SPOTTER

...KINGS COUNTY...

BROOKLYN 24.5 800 AM 12/27 PUBLIC
MARINE PARK 24.5 800 AM 12/27 PUBLIC
SHEEPSHEAD BAY 24.0 700 AM 12/27 TRAINED SPOTTER

...NASSAU COUNTY...

NORTH MASSAPEQUA 23.5 1200 PM 12/27 PUBLIC
WANTAGH 22.0 1100 AM 12/27 TRAINED SPOTTER
LEVITTOWN 21.9 119 PM 12/27 PUBLIC
OLD BETHPAGE 20.5 907 AM 12/27 TRAINED SPOTTER
PLAINVIEW 20.5 1200 PM 12/27 TRAINED SPOTTER
WOODMERE 19.4 950 AM 12/27 PUBLIC
CARLE PLACE 18.2 1200 PM 12/27 TRAINED SPOTTER
FARMINGDALE 18.0 1030 AM 12/27 PUBLIC
FLORAL PARK 18.0 1000 AM 12/27 TRAINED SPOTTER
NEW HYDE PARK 16.8 200 PM 12/27 TRAINED SPOTTER
GARDEN CITY 16.7 930 AM 12/27 PUBLIC
BELLMORE 16.4 1200 PM 12/27 TRAINED SPOTTER
VALLEY STREAM 16.0 1150 AM 12/27 TRAINED SPOTTER
BALDWIN HARBOR 16.0 800 AM 12/27 TRAINED SPOTTER
LONG BEACH 16.0 245 AM 12/27 TRAINED SPOTTER
SEAFORD 15.5 800 AM 12/27 TRAINED SPOTTER
WEST HEMPSTEAD 12.5 800 AM 12/27 TRAINED SPOTTER
GLEN COVE 12.0 1200 PM 12/27 TRAINED SPOTTER

...NEW YORK COUNTY...

CENTRAL PARK 20.0 700 AM 12/27 CENTRAL PARK ZOO

...ORANGE COUNTY...

HARRIMAN 26.0 630 AM 12/27 TRAINED SPOTTER
MONROE 26.0 1000 AM 12/27 PUBLIC
TUXEDO PARK 26.0 255 AM 12/27 PUBLIC
HIGHLAND MILLS 25.0 915 AM 12/27 PUBLIC
WASHINGTONVILLE 22.0 1043 AM 12/27 TRAINED SPOTTER
MOUNTAIN LODGE PARK 22.0 1121 AM 12/27 TRAINED
SPOTTER
CORNWALL ON HUDSON 18.0 1130 AM 12/27 TRAINED
SPOTTER
MONTGOMERY 18.0 1100 AM 12/27 PUBLIC
NEW WINDSOR 17.5 745 AM 12/27 PUBLIC
GOSHEN 17.5 900 AM 12/27 TRAINED SPOTTER
NEWBURGH 16.5 900 AM 12/27 TRAINED SPOTTER
WARWICK 14.0 1011 AM 12/27 TRAINED SPOTTER
MIDDLETOWN 13.0 1020 AM 12/27 PUBLIC

...PUTNAM COUNTY...

COLD SPRING 17.0 730 AM 12/27 PUBLIC
LAKE CARMEL 13.5 940 AM 12/27 TRAINED SPOTTER
MAHOPAC 12.5 100 PM 12/27 TRAINED SPOTTER

...QUEENS COUNTY...

MIDDLE VILLAGE 21.5 1250 PM 12/27 PUBLIC
FLUSHING 21.0 207 PM 12/27 TRAINED SPOTTER
BAYSIDE 20.5 1200 PM 12/27 TRAINED SPOTTER
HOWARD BEACH 18.0 200 PM 12/27 TRAINED SPOTTER
RICHMOND HILL 18.0 1200 PM 12/27 TRAINED SPOTTER
ASTORIA 16.1 801 AM 12/27 PUBLIC
FRESH MEADOWS 16.0 1000 AM 12/27 PUBLIC
JFK AIRPORT 15.6 700 AM 12/27 FAA CONTRACT
OBSERVER
LA GUARDIA AIRPORT 14.0 700 AM 12/27 FAA CONTRACT
OBSERVER
WOODSIDE 14.0 645 AM 12/27 TRAINED SPOTTER

...RICHMOND COUNTY...

GREAT KILLS 29.0 900 AM 12/27 PUBLIC
WESTERLEIGH 26.0 500 AM 12/27 PUBLIC
ELTINGVILLE 22.0 800 AM 12/27 PUBLIC
STATEN ISLAND 17.8 800 AM 12/27 TRAINED SPOTTER

...ROCKLAND COUNTY...

TALLMAN 24.0 1055 AM 12/27 PUBLIC
WEST HAVERSTRAW 21.0 130 PM 12/27 PUBLIC

...SUFFOLK COUNTY...

UPTON 18.8 100 PM 12/27 NWS OFFICE
NORTH BABYLON 18.5 845 AM 12/27 PUBLIC
PATCHOGUE 17.0 900 AM 12/27 PUBLIC
CENTEREACH 17.0 930 AM 12/27 TRAINED SPOTTER
WEST ISLIP 16.0 1215 PM 12/27 TRAINED SPOTTER
EAST NORTHPORT 15.5 715 AM 12/27 TRAINED SPOTTER
SOUND BEACH 15.5 1200 PM 12/27 NWS EMPLOYEE
NORTHPORT 15.2 138 PM 12/27 TRAINED SPOTTER
CENTERPORT 15.0 650 AM 12/27 COOP-OBSERVER
BLUE POINT 15.0 1100 AM 12/27 PUBLIC
EAST SETAUKET 15.0 715 AM 12/27 PUBLIC
MOUNT SINAI 14.2 1255 PM 12/27 NWS EMPLOYEE
ISLIP AIRPORT 14.2 100 PM 12/27 FAA CONTRACT
OBSERVER
QUOGUE 14.0 1100 AM 12/27 PUBLIC

SHOREHAM	14.0	900 AM 12/27	TRAINED SPOTTER
SAYVILLE	14.0	1000 AM 12/27	PUBLIC
HOLBROOK	12.5	900 AM 12/27	PUBLIC
BAITING HOLLOW	12.0	145 PM 12/27	PUBLIC
SMITHTOWN	11.5	1000 AM 12/27	TRAINED SPOTTER
PORT JEFFERSON	11.0	800 AM 12/27	PUBLIC
DIX HILLS	10.7	900 AM 12/27	TRAINED SPOTTER
FLANDERS	10.0	620 AM 12/27	TRAINED SPOTTER
ORIENT	10.0	1230 AM 12/27	PUBLIC
STONY BROOK	7.3	1000 AM 12/27	TRAINED SPOTTER
MATTITUCK	6.0	1100 AM 12/27	CO-OP OBSERVER

...WESTCHESTER COUNTY...

LARCHMONT	22.0	940 AM 12/27	PUBLIC
SCARSDALE	22.0	915 AM 12/27	PUBLIC
BRONXVILLE	22.0	935 AM 12/27	PUBLIC
MOUNT VERNON	22.0	940 AM 12/27	PUBLIC
ARMONK	20.0	900 AM 12/27	PUBLIC
YONKERS	19.5	800 AM 12/27	TRAINED SPOTTER
HASTINGS-ON-HUDSON	18.0	930 AM 12/27	PUBLIC
BRIARCLIFF MANOR	13.1	810 AM 12/27	PUBLIC