

PAGE #1 Jun 2023 West Henrico Co. - Glen Allen Weather Center 37.65537° N. 77.56929° W. - Koontz																								
1	2	3	4	5	6	7	8	9	10	11	12	13	14	15	16	17	18	19						
Jun 2023	Week	TEMPERATURE °F				TEMPERATURE °F				SKY		PRECIPITATION			FROZ. PRECIP.		1st PERIOD							
	Day	MAX.	Time	MIN.	Time	RANGE	MEAN	CHANGE	SOIL	AM	PM	Liquid	1 Hr.	5 Min.	NEW	GROUND	START	END						
Jun-01	Thu	77.7	16:14	56.7	3:59	21.0	67.2	0.9	69	2	2													
Jun-02	Fri	86.9	16:33	57.7	6:12	29.2	72.3	5.1	67	0	0													
Jun-03	Sat	85.4	15:05	61.3	5:40	24.1	73.4	1.0	68	0	0													
Jun-04	Sun	69.8	15:04	54.7	23:53	15.1	62.3	-11.1	69	2	2													
Jun-05	Mon	79.0	17:24	51.8	4:47	27.2	65.4	3.2	68	0	1													
Jun-06	Tue	80.4	16:39	53.7	5:07	26.7	67.1	1.7	68	2	2													
Jun-07	Wed	79.1	13:22	60.9	23:59	18.2	70.0	2.9	68	2	2	T	T	T			0450	0535						
Jun-08	Thu	76.6	15:18	55.3	5:54	21.3	66.0	-4.1	68	2	2													
Jun-09	Fri	78.7	13:25	51.8	6:01	26.9	65.3	-0.7	68	0	2	T	T	T			0140	0210						
Jun-10	Sat	85.0	16:24	52.2	5:57	32.8	68.6	3.3	68	0	0													
Jun-11	Sun	88.0	15:01	60.4	6:03	27.6	74.2	5.6	69	0	1													
Jun-12	Mon	81.3	17:47	68.4	5:57	12.9	74.9	0.6	70	2	2	0.05	0.04	0.01			0130	0145						
Jun-13	Tue	81.3	14:14	55.4	6:01	25.9	68.4	-6.5	69	0	1													
Jun-14	Wed	82.0	14:17	56.8	5:47	25.2	69.4	1.1	70	1	2													
Jun-15	Thu	84.6	16:29	56.5	6:08	28.1	70.6	1.1	69	0	1													
Jun-16	Fri	81.5	13:39	61.6	23:59	19.9	71.6	1.0	70	2	2	0.02	0.01	0.01			1410	1720						
Jun-17	Sat	84.2	15:50	56.2	6:04	28.0	70.2	-1.3	69	0	1													
Jun-18	Sun	86.1	15:53	56.2	5:56	29.9	71.2	1.0	70	0	0													
Jun-19	Mon	88.4	15:46	64.2	6:07	24.2	76.3	5.2	70	2	2	0.03	0.03	0.01			1255	1310						
Jun-20	Tue	77.9	11:59	69.0	5:56	8.9	73.5	-2.9	71	2	2	0.02	0.02	0.01			1130	1455						
Jun-21	Wed	70.8	0:01	61.7	21:08	9.1	66.3	-7.2	70	2	2	0.80	0.21	0.03			0001	1205						
Jun-22	Thu	70.6	23:53	62.0	0:01	8.6	66.3	0.0	68	2	2	0.25	0.14	0.02			0001	0930						
Jun-23	Fri	80.6	12:49	69.5	23:57	11.1	75.1	8.8	68	2	2	0.60	0.24	0.11			0001	0630						
Jun-24	Sat	86.2	15:27	67.2	6:04	19.0	76.7	1.7	70	2	2	T	T	T			1930	2000						
Jun-25	Sun	89.5	17:05	65.8	6:00	23.7	77.7	1.0	71	0	1	T	T	T			1255	1310						
Jun-26	Mon	89.6	15:39	65.7	20:27	23.9	77.7	0.0	72	2	1	0.59	0.38	0.17			2008	2400						
Jun-27	Tue	86.2	14:42	64.2	5:43	22.0	75.2	-2.5	73	2	1	0.09	0.10	0.04			0001	0050						
Jun-28	Wed	84.5	17:01	64.8	5:40	19.7	74.7	-0.5	73	1	2													
Jun-29	Thu	84.8	16:32	60.3	5:54	24.5	72.6	-2.1	73	0	0													
Jun-30	Fri	89.0	15:57	67.6	6:06	21.4	78.3	5.8	73	2	2													
TOTAL NUMBER		2466 30		1810 30		656.1 30	2137.7 30	12.0 30	2089 30	34 30	42 30	2.45 9	1.17 9	0.41 9	0.0 0	0.0 0	Col.26-27 DAILY AVE RH							
AVERAGE		82.19	15:10	60.32	9:00	21.87	71.26		69.63	1.13	1.40	Ave. Tot.	Ave.Max	Ave.Max			74.7	Percent						
NORMALS		86.19		65.59		20.61	75.99		74.73	0.94	1.10	4.77	1.29	0.35	0.0	0.0	72.1	Percent						
DEPARTURES		-4.00		-5.27		1.26	-4.74		-5.10	0.19	0.30	-2.32	-0.91	-0.18			2.6	Percent						
MaxTemps. >= 70°F		89.6	Ave.HighMax	69.5	Ave.High Min	32.8	78.3	8.8	73.0	Whole Day		0.80	0.38	0.17			Precip	24 Hr.						
2023 30		Jun-26	96.0	Jun-23	74.0	Jun-10	Jun-30	Jun-23	Jun-27	AVE.		Jun-21	Jun-26	Jun-26			Amount	Date						
Ave. 29.3			Dep.		Dep.					Normal														
Departure 0.7			-6.4		-4.5					Depart.														
Min. Temps. >70°F		69.8	Ave.LowMax	51.8	Ave.LowMin	8.6	62.3	-11.1	67.0	SKY	AM	PM	≥ 0.10	INCHES	≥ 1.00	INCHES	≥ 2.00	INCHES						
2023 0		Jun-04	71.5	Jun-05	53.6	Jun-22	Jun-04	Jun-04	Jun-02	CLEAR	12	5	≥ 4	DAYS	0	DAYS	0	DAYS						
Ave. 8.6			Dep.		Dep.					PT.CLO.	2	8	HOTTEST	78.3	Highest	Lowest	COOLEST							
Departure -8.6			-1.7		-1.8					CLOUDY	16	17	DAY	6-30	Mean	Mean	DAY							
Days Max. <=32 °F		0		MAX.	≥ 95	≥ 90	≥ 85	≥ 80	≥ 75	≥ 70	≥ 65	≥ 60	≥ 55	≥ 50	≥ 45	≥ 40								
Days Max. >=90°F		2		DAYS	0	2	14	21	27	30	30	30	30	30	30	30								

The Glen Allen Station had 12 Records or Record Ties in June 2023

[illegible]

June 2023

Springfield Park, Glen Allen, VA

Looking at the two graphs for the Airport and Springfield Park both show an abundance of below average temperatures particularly the 20th to the 23rd.

The 2.45 inches of rain is a departure of -2.32 inches and June was the 3rd driest June on record based on a 14-year average with 9 days of measurable precipitation.

The mean temperature for June was 71.3 F with a -4.7 F departure and was the coolest June on record in the past 14 years. The highest temperature for the month was 89.6 on the 26th and there were 2 days rounded up to equal to 90 F or greater which was a -6.4-day departure. There were only 0 days the minimum temperature was equal to or greater than 70°F and the average is 8.6 days. The average min. temp. of 60.3 F was the lowest on record for June. The highest min. for June was 69.5 F on the 23rd which set a new low record for June. The maximum average temperature for June was 82.19 F a -4.0 F departure. Springfield Park had 12 new daily records for the 14 years of records mainly for high temp. range records. The highest daily temperature range in June was 32.8 F on June 10th which is a new maximum record for the date. The minimum daily temp. range for June was only 8.6 F on June 22nd which was a new record low for the date; the previous record was 12 F in 2018. The daily ave. temp. range for June was 21.9 F which was the 4th highest on record for June. The hottest day with the highest daily mean was 78.3 F on the 30th which was the lowest on record for June.

June's highest wind gust was 29 mph on the 21st. Springfield Park had no strong electrical thunderstorms. The highest barometric pressure was 30.13 inches of mercury on the 1st, and the lowest pressure for June was 29.60 inches of mercury on the 16th. The average cloud cover for this June was the highest on record. Much haze this month from wild fires in Canada obscured the sky. The cloudiness is greater in June in part as cloudiness was used instead of "obscured by haze and smoke".

Richmond International Airport June 2023

The Richmond International Airport had 3.64 inches of precipitation for June which was a -1.00-inch departure, making it the 63rd driest June on record since 1887. There were 12 days with measurable precip. The Airport had 1.19 inches more than Springfield Park in West Henrico.

The Airport's mean temperature for June of 72.3 F was a -2.7 F departure from ave. and the 24th coolest June since 1897. The lowest mean on record since 1897 for June is 68.4 in 1907. The Airport's maximum temperature average for June was 82.9 F, a -2.7 F departure and is the 28th lowest average since 1897. The Airport's highest maximum temperature for June was 90 F on the 19th and 26th. Only 3 years since 1897 have had a lower maximum temp. for June than 90 F and they were 1916, 1919, and 1972 with 89 F. The lowest maximum temperature for June was 69 F on the rainy day of the 21st. The min. temp. average for June was 61.7 F, a -2.8 F departure. The Airport had 0 days the minimum temperature was greater than or equal to 70 F for the month. The daily high mean temperature (hottest day) for June was 78.5 F on the 26th and the record is 77 F set in 1916. The daily lowest mean temperature (coolest day) for June was 63.5 F on the 4th. The max temperature range for June was 31 F on the 10th and the lowest was 5 F on the 21st. The average daily temperature range was 21.2 F, a -0.1 F departure.

The Airport had 1 daily records in June.

June 22nd 9 F low temp range was the lowest on record for the date; the previous record was 10 F set in 2000.

ACON - VA/NC/SC

The Atlantic Coast Observer Network: Virginia, North Carolina, South Carolina

June 2023

Station summary of Climatological Data

Observer: Lowell L. Koontz Acon Station ID: West Henrico - Glen Allen, VA .

Observation Times: Temps Recorded 2400 Precipitation Recorded 2400

TEMPERATURE °F

A	MEAN MAXIMUM	82.19
B	MEAN MINIMUM	60.32
C	MEAN MONTHLY	71.26
C1	MEAN TEMP DEP.	-4.74
D	MAXIMUM	90
E	DATE(s) OF MAX.	Jun-26
F	MINIMUM	51.8
G	DATE(s) OF MIN.	5 th
H	# DAYS MAX. > = 90°	2
I	# MIN. >= 70 °F	0
J	MIN. < = 32°	0
K	MIN. < = 0°	0
K1	AVE RELATIVE HUMIDITY	74.7

WIND MPH

L	MAX. GUST	29
M	DIRECT. OF GUST	North
N	DATE	Jun-21
	TIME	11:14

NUMBER DAYS WITH -

O	THUNDER	3
P	HAIL	0
Q	GLAZE	0
R	ICE PELLETS (SLEET)	0
R1	DENSE FOG < = 1/4 MILE	0

PRECIPITATION INCHES

T	MONTH TOTAL	2.45
U	CALENDAR DAY MAX.	0.80
U1	DATE OF MAX.	Jun-21
V	24-HR. PERIOD MAX.	0.80
V1	DATE(s) OF MAX. PD.	Jun-21
W	# DAYS > = 0.01"	9
X	# DAYS > = 1.00"	0
Y	YR. TO DATE TOT.	16.19
	MAX. 1 HR. PRECIP.	0.38
	MAX. 5 MIN PRECIP.	0.17

SNOWFALL INCHES

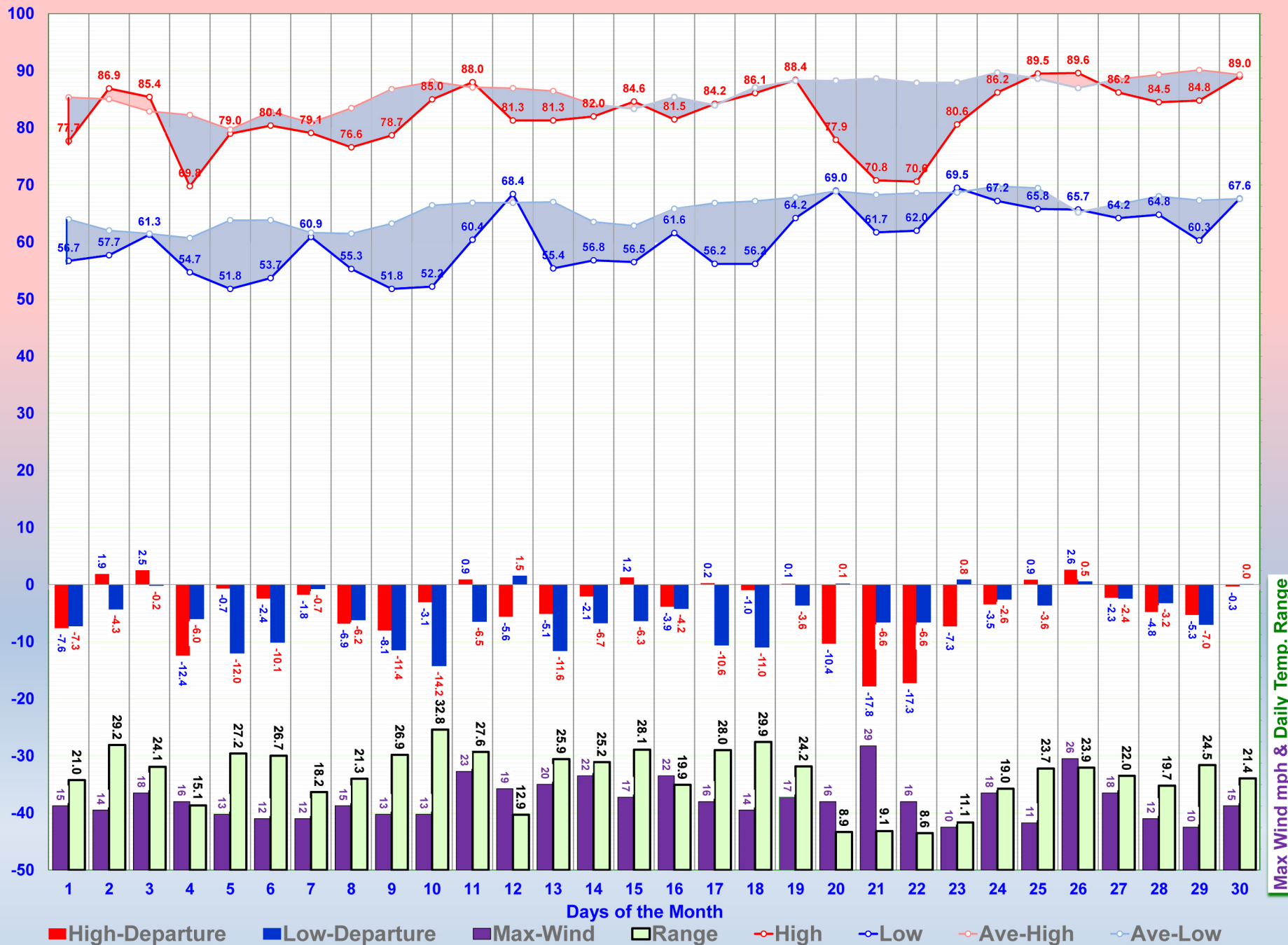
Z	DAILY MAXIMUM	0
1	DATE OF MAX.	
2	DAYS= > TRACE	0
3	DAYS > = 1.0"	0
4	MONTHLY TOTAL	0.00
5	2022-2023	0.4

BAROMETER

6	MAXIMUM	30.13
6A	DATE	Jun-01
7	MINIMUM	29.60
7A	DATE	Jun-16
8	AVE. MONTHLY PRESSURE	29.87
CWA	NWS COUNTY WARNING AREA	Henrico

SPRINGFIELD PARK'S JUNE TEMPERATURE & WIND GRAPH

Temperature in Degrees F



Max Wind mph & Daily Temp. Range

The Richmond International Airport JUNE TEMPERATURE GRAPH

