

| 1 | 2 | 3 | 4 | 5 | 6 | 7 | 8 | 9 | 10 | 11 | 12 | 13 | 14 | 15 | 16 | 17 | 18 | 19 |
|--|------|----------------|-------------------------------------|----------------|--------------------------------------|----------------|----------------|-----------------|----------------|---|----------|----------------|----------------|----------------|-----------------|----------------|----------------------------------|------------------------------------|
| Jun 2022 | Week | TEMPERATURE °F | | | | TEMPERATURE °F | | | | SKY | | PRECIPITATION | | | FROZ. PRECIP. | | 1st PERIOD | |
| | Day | MAX. | Time | MIN. | Time | RANGE | MEAN | CHANGE | SOIL | AM | PM | Liquid | 1 Hr. | 5 Min. | NEW | GROUND | START | END |
| Jun-01 | Wed | 93.6 | 14:24 | 68.9 | 6:09 | 24.7 | 81.3 | -0.1 | 74 | 1 | 1 | T | T | T | | | 1930 | 1940 |
| Jun-02 | Thu | 93.8 | 15:13 | 69.2 | 5:29 | 24.6 | 81.5 | 0.3 | 75 | 0 | 1 | 0.02 | 0.02 | 0.01 | | | 1748 | 1845 |
| Jun-03 | Fri | 79.3 | 15:20 | 60.9 | 23:56 | 18.4 | 70.1 | -11.4 | 75 | 2 | 2 | | | | | | | |
| Jun-04 | Sat | 84.2 | 15:10 | 56.4 | 6:14 | 27.8 | 70.3 | 0.2 | 74 | 0 | 0 | | | | | | | |
| Jun-05 | Sun | 81.7 | 15:38 | 57.0 | 6:14 | 24.7 | 69.4 | -1.0 | 73 | 0 | 1 | | | | | | | |
| Jun-06 | Mon | 83.7 | 16:04 | 53.5 | 6:14 | 30.2 | 68.6 | -0.8 | 73 | 0 | 0 | | | | | | | |
| Jun-07 | Tue | 84.8 | 16:25 | 63.4 | 5:27 | 21.4 | 74.1 | 5.5 | 73 | 2 | 2 | | | | | | | |
| Jun-08 | Wed | 92.8 | 15:40 | 69.7 | 5:47 | 23.1 | 81.3 | 7.2 | 73 | 0 | 2 | 0.18 | 0.18 | 0.03 | | | 2000 | 2215 |
| Jun-09 | Thu | 87.1 | 15:18 | 65.4 | 23:56 | 21.7 | 76.3 | -5.0 | 74 | 1 | 1 | | | | | | | |
| Jun-10 | Fri | 81.5 | 14:37 | 55.8 | 6:08 | 25.7 | 68.7 | -7.6 | 75 | 0 | 2 | | | | | | | |
| Jun-11 | Sat | 83.2 | 15:17 | 64.0 | 5:24 | 19.2 | 73.6 | 4.9 | 74 | 2 | 2 | 0.01 | 0.01 | T | | | 0820 | 0825 |
| Jun-12 | Sun | 84.7 | 16:49 | 67.6 | 8:26 | 17.1 | 76.2 | 2.6 | 74 | 2 | 1 | 1.27 | 0.89 | 0.29 | | | 0420 | 0650 |
| Jun-13 | Mon | 93.4 | 14:30 | 70.0 | 5:17 | 23.4 | 81.7 | 5.6 | 74 | 1 | 1 | T | T | T | | | 0001 | 0030 |
| Jun-14 | Tue | 88.1 | 11:33 | 71.9 | 23:54 | 16.2 | 80.0 | -1.7 | 76 | 2 | 2 | 0.06 | 0.05 | 0.01 | | | 0745 | 0805 |
| Jun-15 | Wed | 89.9 | 14:32 | 67.7 | 6:13 | 22.2 | 78.8 | -1.2 | 75 | 0 | 1 | | | | | | | |
| Jun-16 | Thu | 89.0 | 15:39 | 71.4 | 23:53 | 17.6 | 80.2 | 1.4 | 76 | 2 | 0 | 0.31 | 0.31 | 0.13 | | | 1945 | 2020 |
| Jun-17 | Fri | 95.0 | 14:37 | 70.8 | 3:28 | 24.2 | 82.9 | 2.7 | 76 | 0 | 1 | T | T | T | | | 1740 | 1745 |
| Jun-18 | Sat | 81.0 | 11:15 | 57.9 | 23:58 | 23.1 | 69.5 | -13.5 | 77 | 0 | 0 | | | | | | | |
| Jun-19 | Sun | 78.7 | 16:40 | 51.3 | 6:04 | 27.4 | 65.0 | -4.5 | 75 | 0 | 1 | | | | | | | |
| Jun-20 | Mon | 79.4 | 15:54 | 53.3 | 5:23 | 26.1 | 66.4 | 1.3 | 74 | 0 | 2 | | | | | | | |
| Jun-21 | Tue | 84.8 | 16:26 | 60.6 | 1:44 | 24.2 | 72.7 | 6.4 | 74 | 2 | 2 | | | | | | | |
| Jun-22 | Wed | 93.9 | 14:33 | 64.3 | 5:35 | 29.6 | 79.1 | 6.4 | 73 | 2 | 2 | 0.44 | 0.20 | 0.03 | | | 1525 | 1630 |
| Jun-23 | Thu | 72.0 | 0:01 | 65.7 | 23:53 | 6.3 | 68.9 | -10.3 | 74 | 2 | 2 | 0.33 | 0.16 | 0.02 | | | 0001 | 0235 |
| Jun-24 | Fri | 84.2 | 17:57 | 60.5 | 5:48 | 23.7 | 72.4 | 3.5 | 73 | 1 | 0 | | | | | | | |
| Jun-25 | Sat | 89.4 | 17:43 | 62.9 | 6:10 | 26.5 | 76.2 | 3.8 | 74 | 0 | 1 | | | | | | | |
| Jun-26 | Sun | 90.6 | 15:05 | 67.2 | 5:24 | 23.4 | 78.9 | 2.8 | 75 | 0 | 1 | | | | | | | |
| Jun-27 | Mon | 86.9 | 13:30 | 66.8 | 23:58 | 20.1 | 76.9 | -2.1 | 76 | 2 | 2 | 0.68 | 0.60 | 0.25 | | | 1358 | 1655 |
| Jun-28 | Tue | 81.8 | 17:58 | 56.5 | 6:08 | 25.3 | 69.2 | -7.7 | 75 | 1 | 1 | | | | | | | |
| Jun-29 | Wed | 87.4 | 14:59 | 60.9 | 1:08 | 26.5 | 74.2 | 5.0 | 75 | 0 | 1 | | | | | | | |
| Jun-30 | Thu | 91.6 | 14:43 | 68.4 | 6:26 | 23.2 | 80.0 | 5.8 | 75 | 0 | 2 | 0.40 | 0.40 | 0.15 | | | 1655 | 1730 |
| TOTAL NUMBER | | 2588 30 | | 1900 30 | | 687.6 30 | 2243.7 30 | -1.4 30 | 2234 30 | 25 30 | 37 30 | 3.70 10 | 2.82 10 | 0.92 9 | 0.0 0 | 0.0 0 | Col.26-27 DAILY AVE RH | |
| AVERAGE | | 86.25 | 14:47 | 63.33 | 9:47 | 22.92 | 74.79 | | 74.47 | 0.83 | 1.23 | Ave. Tot. | Ave.Max | Ave.Max | | | 71.7 | Percent |
| NORMALS | | 86.19 | | 65.76 | | 20.43 | 76.08 | | 74.75 | 0.95 | 1.10 | 4.85 | 1.32 | 0.35 | 0.0 | 0.0 | 72.0 | Percent |
| DEPARTURES | | 0.06 | | -2.43 | | 2.49 | -1.29 | | -0.28 | -0.12 | 0.13 | -1.15 | -0.43 | -0.06 | | | -0.3 | Percent |
| MaxTemps. >= 70°F 2022 30 Ave. 29.3 Departure 0.7 | | 95.0 Jun-17 | Ave.HighMax 96.1 Dep. -1.1 | 71.9 Jun-14 | Ave.High Min 74.2 Dep. -2.3 | 30.2 Jun-06 | 82.9 Jun-17 | 7.2 Jun-08 | 77.0 Jun-18 | Whole Day AVE. 1.03 Normal 1.02 Depart. 0.01 | | 1.27 Jun-12 | 0.89 Jun-12 | 0.29 Jun-12 | | | Precip Amount Date Date | 24 Hr. 1.28 Jun-11 Jun-12 |
| Min. Temps. >70°F 2022 4 Ave. 8.9 Departure -4.9 | | 72.0 Jun-23 | Ave.LowMax 71.5 Dep. 0.5 | 51.3 Jun-19 | Ave.LowMin 53.8 Dep. -2.5 | 6.3 Jun-23 | 65.0 Jun-19 | -13.5 Jun-18 | 73.0 Jun-05 | SKY CLEAR | AM 15 | PM 5 | ≥ 0.10 7 | INCHES DAYS | ≥ 1.00 1 | INCHES DAYS | ≥ 2.00 0 | INCHES DAYS |
| | | | | | | | | | | Jun-06 PT.CLO. | 5 | 13 | HOTTEST DAY | 82.9 6-17 | Highest Mean | Lowest Mean | COOLEST DAY | 65 6-19 |
| Days Max. <=32 °F | | 0 | | MAX. | ≥ 95 | ≥ 90 | ≥ 85 | ≥ 80 | ≥ 75 | ≥ 70 | ≥ 65 | ≥ 60 | ≥ 55 | ≥ 50 | ≥ 45 | ≥ 40 | | |
| Days Max. >=90°F | | 9 | | DAYS | 1 | 9 | 18 | 26 | 29 | 30 | 30 | 30 | 30 | 30 | 30 | 30 | | |

The Glen Allen Station had 14 Records or Record Ties in June 2022

[illegible]

June 2022

Springfield Park, Glen Allen, VA

The 3.70 inches of rain had a departure of -1.15 inches and June was the 5th driest June on record based on a 13-year average with 10 days of measurable precipitation.

The mean temperature for June was 74.8 F with a -1.3 F departure and was the 2nd coolest June on record in the past 13 years. The highest temperature for the month was 95.0 on the 17th and there were 9 days of equal to 90 F or greater which was a -0.7 day departure. There were only 4 days the minimum temperature was equal to or greater than 70°F and the average is 8.9 days. The average min. temp. of 63.3 F was the 2nd lowest on record for June and the highest min. for June was 71.9 F on the 14th which set a new low record for June. The maximum average temperature for June was 86.3 F a 0.1°F departure. Springfield Park had 14 new daily records for the 13 years of records mainly for low minimum temps. and for high & low temperature range records. The highest daily temperature range in June was 30.2 F on June 6th which is a new maximum record for the date. The minimum daily temp. range for June was only 6.3 F on June 23rd which was a new record low for the date. The daily ave. temp. range for June was 22.9 F which was the 2nd highest on record for June. The hottest day with the highest daily mean was 82.9 F on the 17th which was the 3rd highest on record for June and had the 2nd highest dew point temp. for June.

June's highest wind gust was 31 mph on the 30th. Springfield Park had 1 strong electrical thunderstorm on the 12th that took out the power for about 12 hours and 6 weak thunderstorms. The highest barometric pressure was 30.28 inches of mercury on the 29th, and the lowest pressure for June was only 29.68 inches of mercury on the 2nd which was the 3rd highest in the past 13 years. Cloud cover for the month was very near the average.

Richmond International Airport

The Richmond International Airport had 6.58 inches of precipitation for June which was a 1.94-inch departure, making it the 11th wettest June on record since 1887. There were only 7 days with measurable precip. but 4 days with more than one inch of rain on the 12th, 22nd, 27th, 30th. The 22nd had 2.03 inches, most rain in a day, but the record for the 22nd is 7.61 inches recorded in 2018. The Airport had 2.88 inches more than Springfield Park in West Henrico. It is interesting that the much above ave. precip. occurred in only 7 days. Only 13 years since 1887 have had less days with measurable precip. in June.

The Airport's mean temperature for June of 75.5 F was a 0.5 F departure from ave. and the 37th warmest June since 1897. The Airport's maximum temperature average for June was 86.6 F, a 1.0 F departure. The Airport's highest maximum temperature for June was 97 F on the 17th and the lowest maximum temperature for June was 72 F on the rainy day of the 23rd. The Airport had 8 days that the maximum temperature was 90 F or higher. The min. temp. average for June was 64.3 F, a -0.2 F departure. The Airport had 7 days the minimum temperature was greater than or equal to 70 F for the month. The daily high mean temperature (hottest day) for June was 84.0 F on the 17th. The daily lowest mean temperature (coolest day) for June was 69 F on the 6th, 19th and 20th and only 3 years have been higher with the record being the hot June 2010 with 71.0 F.

The max temperature range for June was 31 F on the 22nd and the lowest was 5 F on the 23rd; only 16 years had a lower daily temp. range. The average daily temperature range was 22.3 F, a 1.0 F departure.

The Airport had two daily records in June.

June 2nd 82.5 F tied the record set in 1989 for highest daily mean temp. for the date.

June 23rd 5 F low temp range was the lowest on record for the date; the previous record was 6 F set in 1936.

ACON - VA/NC/SC

The Atlantic Coast Observer Network: Virginia, North Carolina, South Carolina

June 2022

Station summary of Climatological Data

Observer: Lowell L. Koontz Acon Station ID: West Henrico - Glen Allen, VA .

Observation Times: Temps Recorded 2400 Precipitation Recorded 2400

TEMPERATURE °F

| | | |
|----|-----------------------|--------|
| A | MEAN MAXIMUM | 86.25 |
| B | MEAN MINIMUM | 63.33 |
| C | MEAN MONTHLY | 74.79 |
| C1 | MEAN TEMP DEP. | -1.29 |
| D | MAXIMUM | 95 |
| E | DATE(s) OF MAX. | Jun-17 |
| F | MINIMUM | 51.3 |
| G | DATE(s) OF MIN. | Jun-19 |
| H | # DAYS MAX. > = 90° | 9 |
| I | # MIN. >= 70 °F | 4 |
| J | MIN. < = 32° | 0 |
| K | MIN. < = 0° | 0 |
| K1 | AVE RELATIVE HUMIDITY | 71.7 |

WIND MPH

| | | |
|---|-----------------|--------|
| L | MAX. GUST | 31 |
| M | DIRECT. OF GUST | South |
| N | DATE | Jun-30 |
| | TIME | 17:00 |

NUMBER DAYS WITH -

| | | |
|----|------------------------|---|
| O | THUNDER | 7 |
| P | HAIL | 0 |
| Q | GLAZE | 0 |
| R | ICE PELLETS (SLEET) | 0 |
| R1 | DENSE FOG < = 1/4 MILE | 0 |

PRECIPITATION INCHES

| | | |
|----|---------------------|---|
| T | MONTH TOTAL | 3.70 |
| U | CALENDAR DAY MAX. | 1.27 |
| U1 | DATE OF MAX. | Jun-12 |
| V | 24-HR. PERIOD MAX. | 1.28 |
| V1 | DATE(s) OF MAX. PD. | Jun 11 th & 12 th |
| W | # DAYS > = 0.01" | 10 |
| X | # DAYS > = 1.00" | 1 |
| Y | YR. TO DATE TOT. | 22.16 |
| | MAX. 1 HR. PRECIP. | 0.89 |
| | MAX. 5 MIN PRECIP. | 0.29 |

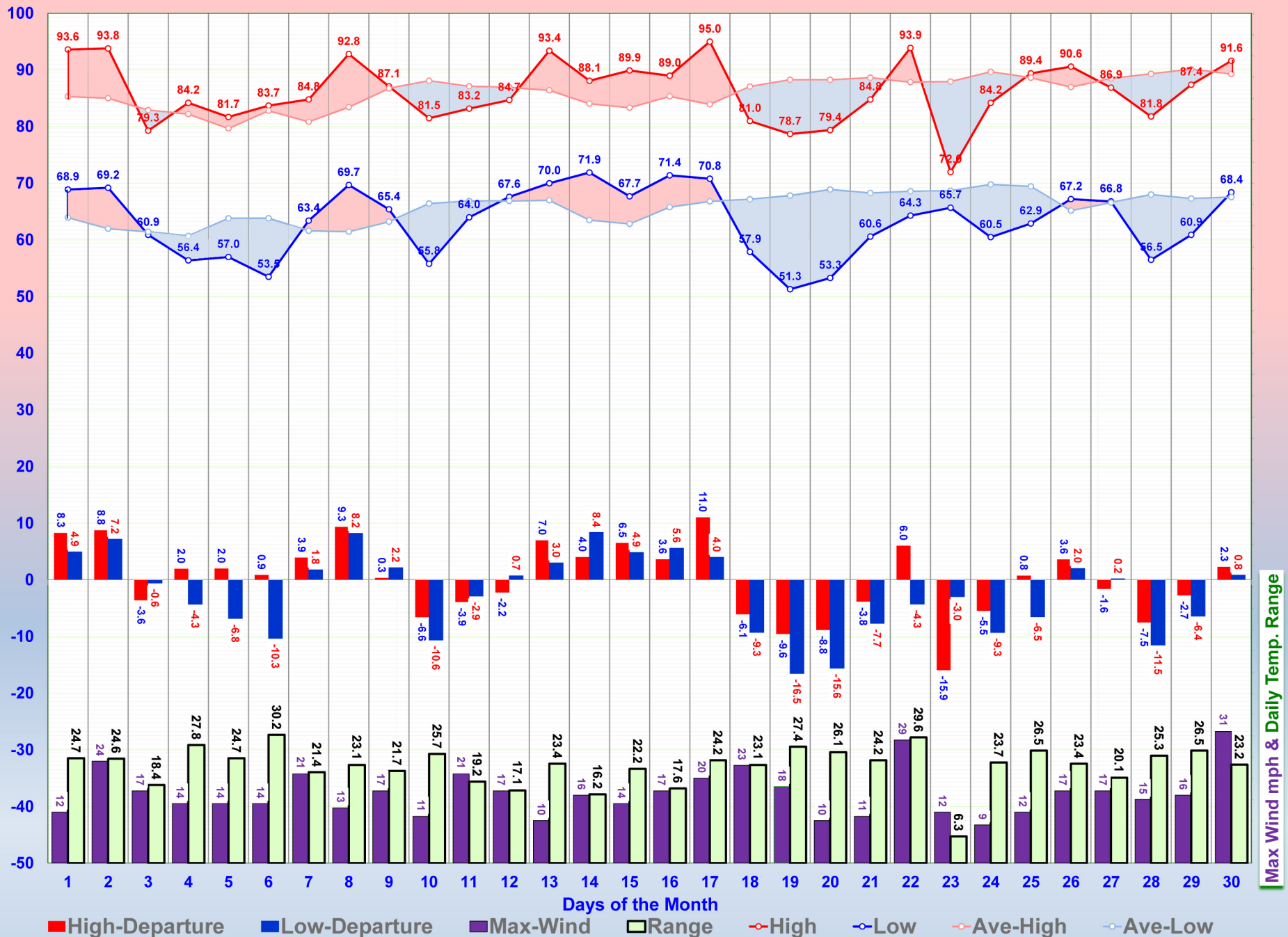
SNOWFALL INCHES

| | | |
|---|---------------|------|
| Z | DAILY MAXIMUM | 0 |
| 1 | DATE OF MAX. | |
| 2 | DAYS= > TRACE | 0 |
| 3 | DAYS > = 1.0" | 0 |
| 4 | MONTHLY TOTAL | 0.00 |
| 5 | 2021-2022 | 10.1 |

BAROMETER

| | | |
|-----|-------------------------|---------|
| 6 | MAXIMUM | 30.28 |
| 6A | DATE | Jun-29 |
| 7 | MINIMUM | 29.68 |
| 7A | DATE | Jun-02 |
| 8 | AVE. MONTHLY PRESSURE | 29.99 |
| CWA | NWS COUNTY WARNING AREA | Henrico |

SPRINGFIELD PARK'S JUNE TEMPERATURE & WIND GRAPH



The Richmond International Airport

JUNE TEMPERATURE GRAPH

Temperature in Degrees F

