

PAGE #1																			Jun 2020 West Henrico Co. - Glen Allen Weather Center 37.65537° N. 77.56929° W. - Koontz																		
1		2		3		4		5		6		7		8		9		10		11		12		13		14		15		16		17		18		19	
Jun 2020		Week Day		TEMPERATURE °F				TEMPERATURE °F				SKY		PRECIPITATION			FROZ. PRECIP.		1st PERIOD																		
				MAX.		Time MIN.		Time		RANGE		MEAN		CHANGE		SOIL		AM		PM		Liquid		1 Hr.		5 Min.		NEW		GROUND		START END					
Jun-01		Mon		75.1		17:45		52.9		6:44		22.2		64.0		-4.8		70		0		0															
Jun-02		Tue		84.2		17:32		56.2		4:42		28.0		70.2		6.2		69		2		1		T		T		T				0830 0915					
Jun-03		Wed		91.6		16:53		67.6		5:56		24.0		79.6		9.4		69		2		2															
Jun-04		Thu		94.5		15:42		71.4		6:35		23.1		83.0		3.4		71		0		1															
Jun-05		Fri		88.3		13:51		73.5		5:58		14.8		80.9		-2.1		72		0		1		T		T		T				2205 2300					
Jun-06		Sat		92.0		16:05		71.6		4:41		20.4		81.8		0.9		73		1		2		0.08		0.05		0.01				0025 0415					
Jun-07		Sun		85.1		16:25		64.5		23:57		20.6		74.8		-7.0		74		0		0		T		T		T				0625 0630					
Jun-08		Mon		87.6		17:37		58.6		6:04		29.0		73.1		-1.7		74		0		0															
Jun-09		Tue		92.2		15:19		64.6		4:41		27.6		78.4		5.3		73		1		1															
Jun-10		Wed		91.6		17:17		74.7		5:48		16.9		83.2		4.8		74		1		1		T		T		T				2330 2335					
Jun-11		Thu		88.3		13:33		71.6		23:30		16.7		80.0		-3.2		75		2		2		1.33		0.81		0.45				0040 0045					
Jun-12		Fri		86.3		17:23		64.5		6:41		21.8		75.4		-4.5		74		0		0															
Jun-13		Sat		82.1		16:47		63.7		6:26		18.4		72.9		-2.5		75		0		0															
Jun-14		Sun		78.6		13:37		60.9		6:07		17.7		69.8		-3.2		74		1		2															
Jun-15		Mon		67.5		16:50		60.9		6:23		6.6		64.2		-5.6		73		2		2		0.04		0.03		0.01				0350 0400					
Jun-16		Tue		67.9		13:52		59.2		6:52		8.7		63.6		-0.6		71		2		2		0.56		0.32		0.07				0005 0140					
Jun-17		Wed		68.1		12:10		60.9		1:03		7.2		64.5		0.9		69		2		2		0.54		0.29		0.07				0001 0110					
Jun-18		Thu		80.5		15:24		65.9		6:43		14.6		73.2		8.7		69		1		2		0.03		0.02		0.01				0105 0205					
Jun-19		Fri		82.1		12:57		66.1		2:50		16.0		74.1		0.9		71		2		2		1.54		1.41		0.27				0545 0615					
Jun-20		Sat		83.7		14:56		66.3		0:52		17.4		75.0		0.9		71		2		2															
Jun-21		Sun		87.4		17:09		65.4		4:43		22.0		76.4		1.4		72		2		1															
Jun-22		Mon		92.6		13:51		68.9		6:05		23.7		80.8		4.3		73		0		2		0.14		0.14		0.07				1420 1520					
Jun-23		Tue		90.8		14:43		66.9		4:29		23.9		78.9		-1.9		74		0		1		0.17		0.17		0.11				0220 0230					
Jun-24		Wed		87.3		16:46		69.5		6:15		17.8		78.4		-0.4		74		0		1		0.01		0.01		T				0250 0300					
Jun-25		Thu		87.9		15:21		67.5		3:53		20.4		77.7		-0.7		75		2		1		0.33		0.33		0.11				1600 1645					
Jun-26		Fri		89.4		15:52		62.4		5:56		27.0		75.9		-1.8		75		0		1															
Jun-27		Sat		92.4		16:13		68.6		5:52		23.8		80.5		4.6		76		1		0															
Jun-28		Sun		90.2		14:18		70.9		5:49		19.3		80.6		0.1		76		2		2		0.02		0.02		0.01				1425 1435					
Jun-29		Mon		91.1		15:39		69.7		5:56		21.4		80.4		-0.2		77		0		0															
Jun-30		Tue		91.8		17:15		67.5		6:11		24.3		79.7		-0.8		77		1		1															
TOTAL				2568				1973				595.3		2270.6		10.9		2190		29		35		4.79		3.60		1.19		0.0		0.0		Col.26-27			
NUMBER				30		30		30		30		30		30		30		30		30		30		12		12		11		0		0		DAILY AVE RH			
AVERAGE				85.61		15:38		65.76		6:35		19.84		75.69				73.00		0.97		1.17		Ave. Tot.		Ave.Max		Ave.Max				74.6		Percent			
NORMALS				86.22				65.72				20.50		76.09				74.97		0.94		1.08		4.93		1.32		0.35		0.0		0.0		71.5 Percent			
DEPARTURES				-0.61				0.05				-0.66		-0.40				-1.97		0.03		0.08		-0.14		0.09		0.10				3.1 Percent					
MaxTemps. >= 70°F				94.5		Ave.HighMax		74.7		Ave.High Min		29		83.2		9.4		77.0		Whole Day AVE. 1.07 Normal 1.01 Depart. 0.06		1.54		1.41		0.45						Precip Amount Date Date		24 Hr. 1.54 Jun-19			
2020 27				Jun-04		96.3		Jun-10		74.2		Jun-08		Jun-10		Jun-03		Jun-29				Jun-19		Jun-19		Jun-11											
Ave. 29.5						Dep.				Dep.								Jun-30																			
Departure -2.5						-1.8				0.5																											
Min. Temps. >70°F				67.5		Ave.LowMax		52.9		Ave.LowMin		6.6		63.6		-7.0		69.0		SKY		AM		PM		≥ 0.10 INCHES		≥ 1.00 INCHES		≥ 2.00 INCHES							
2020 6				Jun-15		71.9		Jun-01		53.9		Jun-15		Jun-16		Jun-07		Jun-02		CLEAR		12		7		7 DAYS		2 DAYS		0 DAYS							
Ave. 8.9						Dep.				Dep.								Jun-03		PT.CLO.		7		11		HOTTEST 83.2		Highest Mean		Lowest Mean		COOLEST 63.55					
Departure -2.9						-4.4				-1.0								Jun-17		CLOUDY		11		12		DAY 6-10						6-16					
Days Max. <=32 °F				0				MAX. DAYS		≥ 95 1		≥ 90 11		≥ 85 20		≥ 80 25		≥ 75 27		≥ 70 27		≥ 65 30		≥ 60 30		≥ 55 30		≥ 50 30		≥ 45 30		≥ 40 30					
Days Max. >=90°F				11																																	

PAGE #3		West Henrico Co. - Glen Allen Weather Center 37.65537° N. 77.56929° W. - Koontz	
39		40	
Jun 2020		REMARKS FOR THE MONTH June - 2020	
Jun-01	A BEAUTIFUL SPRING DAY WITH DEEP BLUE SKY AND LOW DEW POINT OF 40 °F AT 0525 & VERY FEW CUMULUS CLOUDS		
Jun-02	DEW AT 0600 THEN WIND EVAPORATED DEW-CLOUDY AM WITH CLEARING STARTING AT 1145-PM PARTLY CLOUDY WITH CIRRUS, ALTOCUMULUS AND CIRROSTRATUS		
Jun-03	TROPICAL STORM CRISTOBAL FORMS IN GULF-SUN THROUGH HIGH THIN CIRRUS AND CIRROSTRATUS IN AM & A BROKEN OVERCAST SKY IN PM		
Jun-04	THUNDER 1745, 1750, 1754 A SMALL TS PASSED TO OUR WEST-CLEAR AFTER 0800 & CUMULUS AFTER 1430 WITH INCREASING CLOUDINESS BY 1815		
Jun-05	AM EST. 20-25 % CLOUDY-PM EST. 35-45% CLOUDY-A HUMID BUT BREEZY DAY		
Jun-06	TS RATED 1-1-1 AROUND 0220-SKY CLEARED AROUND 0920 THEN THIN CIRRUS-PM HAD CUMULUS AND CIRRUS WITH INCREASING CLOUDINESS		
Jun-07	0630 SPRINKLE-AM CLOUDY TO 0750 THEN VERY CLEAR RESTOF DAY-LOW RH, MIN. DEW POINT WAS 54 °F AT 1415		
Jun-08	CRISTOBAL HIT LA COAST WITH 50-60 MPH WINDS-VERY CLEAR AM-CUMULUS CLOUDS STARTED COMING IN AT 1500		
Jun-09	THIN CIRRUS IN AM AND CUMULUS CAME IN AROUND 1130 AND GAVE A PC PM-WARM BREEZY AND HUMID PM		
Jun-10	EXTREMELY HUMID DAY-MAX. DEW POINT CHECKED WITH TESTO INSTRUMENT WITH A READING OF 78 °F - MAX. PM WIND 20 MPH		
Jun-11	3RD PD. OF PRECIP. 0530-0535, 4TH PD. 0610-0615, 5TH PD. 1355-1420, 6TH PD. TS RATED 1-2-4 FROM 1905-1945, 7TH PD. OF RAIN 0.07 FROM 2125-2240-4 THUNDERS HEARD 1923, 1927, 1936, 1938		
Jun-12	CLEAR SKIES AND LOW RH-A PLEASANT JUNE DAY-ONLY A FEW SCATTERED FAIR WEATHER CUMULUS CLOUDS TODAY		
Jun-13	CLEAR SKIES WITH A LOW DEW POINT TEMP. OF 50 °F AT 0554-GREAT MID-JUNE WEATHER		
Jun-14	CLEARING STARTED AT 0830 THEN CUMULUS AFTER 0915 THEN PC - PM BREEZY COOL AND MOSTLY CLOUDY		
Jun-15	3RD PD. OF RAIN 0800-0905, 4TH PD. 1155-1825, 5TH PD. 2235-2400		
Jun-16	3RD PD. OF PRECIP. 1115-1735, 4TH PD. 1845-2400-ON AND OFF SPRINKLES MOST OF DAY AND VERY COOL FOR JUNE		
Jun-17	3RD PD. OF PRECIP. 0525-0540, 4TH PD. 0650-0710, 5TH PD. 1020-1055, 6TH PD. 1155-1925, 7TH PD. 2025-2030, 8TH PD. 2140-2338		
Jun-18	3RD PD. OF SPRINKLES 1400-1405-CLEARING AROUND 0645 THEN PC BY 1000 AND CLOUDY BY 1100-PM BROKEN OVERCAST		
Jun-19	HEAVIEST RAIN FROM 1410-1440, CLOUDY MOST OF DAY EXCEPT 1030-1130-TS RATED 3-3-5		
Jun-20	FOG HEAVIEST AT 0615-CLEARING STARTED AT 1100 AND PC FROM 1230-1430-THEN CLOUDY MOST OF REST OF DAY		
Jun-21	FOG HEAVIEST AT 0615 AND CLEARING BY 0815-SKY WAS MAINLY PC IN PM EST. 50-60% CLOUDY		
Jun-22	TS RATED 1-3-1 - TODAY WAS CLEAR UNTIL 1045 THEN CIRRUS AND CIRROSTRATUS & PM BECAME CLOUDY-1ST THUNDER HEARD AT 1431 AS 1 TS PASSED TO OUR WEST		
Jun-23	SUN THROUGH SOME THIN AM CIRRUS - A TS RATED 1-3-2 AND ALSO AM HAD ALTOCUMULUS CLOUDS		
Jun-24	SPRINKLE FROM 0250-0300-COOLER AND LESS HUMIDITY TODAY-PM EST. 25-35% CLOUDY		
Jun-25	TS RATED 1-2-2-CLOUDY AM AND PM MOSTLY CLOUDY UNTIL TS PASSED THEN CLEARING FROM 1700-2100 OR DARK		
Jun-26	A CLEAR AM AND A PC PM BECAUSE OF CLOUDINESS AFTER 1600-ALSO LOW RH TODAY		
Jun-27	AM HAD SUN THROUGH CIRROSTRATUS, ALTOSTRATUS EARLY BUT PM WAS MOSTLY CLEAR WITH SCATTERED CIRRUS		
Jun-28	2 THUNDERS HEARD AT 1455 AND 1459-PM SHOWER AFTER A WARM HUMID DAY-TS WAS WEAK AND RATED 1-1-1		
Jun-29	MOSTLY CLEAR WITH SOME SCATTERED FAIR WEATHER CUMULUS FROM 1115-1715		
Jun-30	THE AM HAD SUNLIGHT THROUGH CIRRUS AND CIRROSTRATUS CLOUDS - THE PM HAD CUMULUS CLOUDS MAKING THE PM PARTLY CLOUDY - A HOT DAY BUT LOW HUMIDITY.		
DATE	EXTENSION OF LENGTHY DAILY REMARKS		
Jun-11	A STRONGER STORM PASSED TO OUR EAST AND A WEAKER STORM TO OUR WEST THEN A SIMILAR THING OCCURRED AT 2045 BUT BOTH STORMS WERE WEAKER		
ALL DEW POINTS THIS MONTH AND THE SUMMER ARE REDUCED BY 2 DEGREES F AS THE DAVIS INSTRUMENT OVERRATES DEW POINTS.			
The daily records for the month are listed on page # 4 and not found in the remarks.			
The link below explains how observations are taken at the Glen Allen Weather Station - Note the Numbers match the column numbers on the Observation Sheet			
Rules for making Observations in 2020			

The Glen Allen Station had 19 Records or Record Ties in June 2020

[illegible]

ACON - VA/NC/SC

The Atlantic Coast Observer Network: Virginia, North Carolina, South Carolina

June 2020

Station summary of Climatological Data

Observer: Lowell L. Koontz Acon Station ID: West Henrico - Glen Allen, VA .

Observation Times: Temps Recorded 2400 Precipitation Recorded 2400

TEMPERATURE °F

A	MEAN MAXIMUM	85.61
B	MEAN MINIMUM	65.76
C	MEAN MONTHLY	75.69
C1	MEAN TEMP DEP.	-0.40
D	MAXIMUM	95
E	DATE(s) OF MAX.	Jun-04
F	MINIMUM	52.9
G	DATE(s) OF MIN.	Jun-01
H	# DAYS MAX. > = 90°	11
I	# MIN. >= 70 °F	6
J	MIN. < = 32°	0
K	MIN. < = 0°	0
K1	AVE RELATIVE HUMIDITY	74.6

WIND MPH

L	MAX. GUST	25
M	DIRECT. OF GUST	SSW
N	DATE	Jun-22
	TIME	14:46

NUMBER DAYS WITH -

O	THUNDER	8
P	HAIL	0
Q	GLAZE	0
R	ICE PELLETS (SLEET)	0
R1	DENSE FOG < = 1/4 MILE	1

PRECIPITATION INCHES

T	MONTH TOTAL	4.79
U	CALENDAR DAY MAX.	1.54
U1	DATE OF MAX.	Jun-19
V	24-HR. PERIOD MAX.	1.54
V1	DATE(s) OF MAX. PD.	Jun-19
W	# DAYS > = 0.01"	12
X	# DAYS > = 1.00"	2
Y	YR. TO DATE TOT.	21.12
	MAX. 1 HR. PRECIP.	1.41
	MAX. 5 MIN PRECIP.	0.45

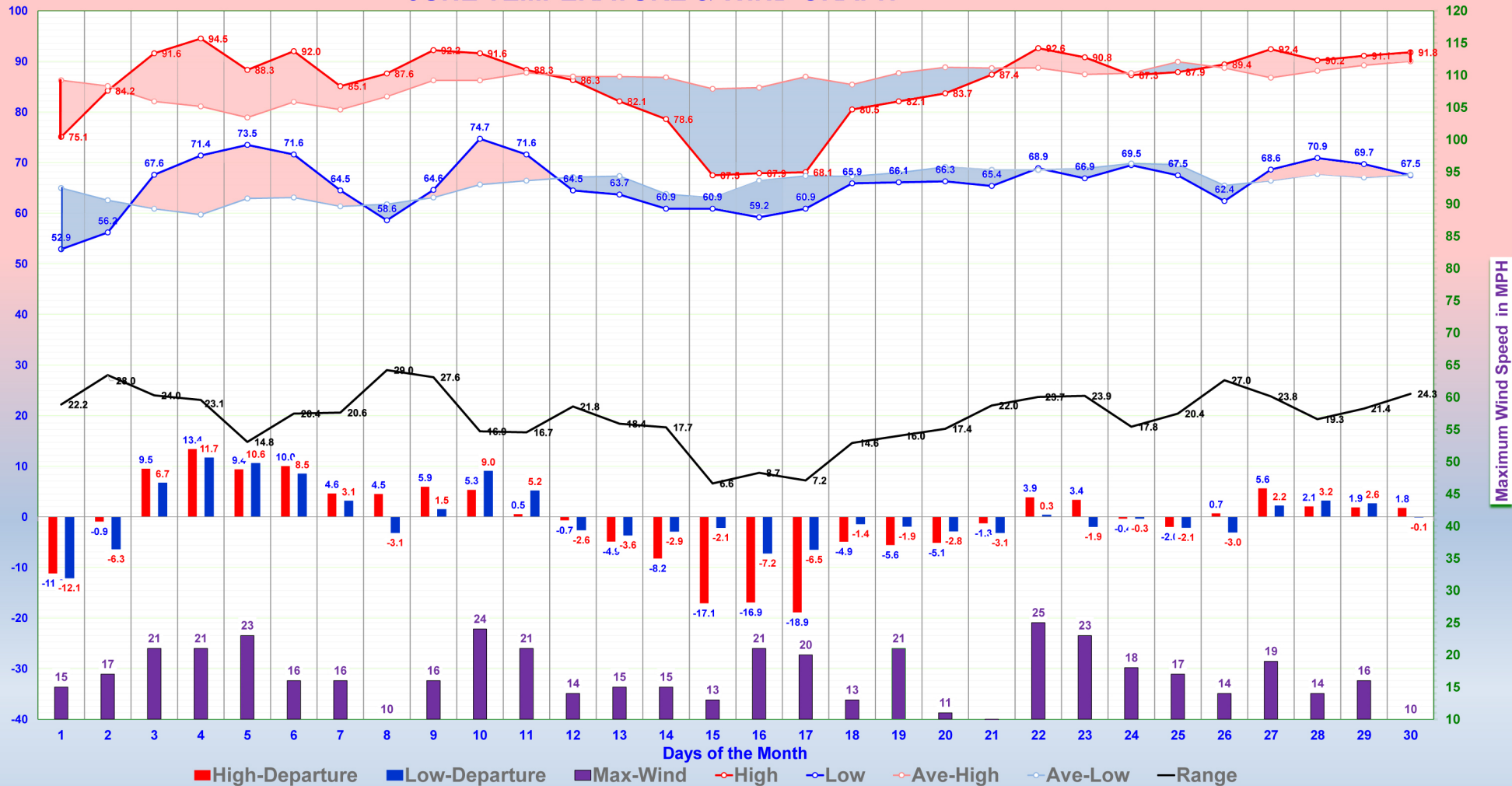
SNOWFALL INCHES

Z	DAILY MAXIMUM	0
1	DATE OF MAX.	
2	DAYS= > TRACE	0
3	DAYS > = 1.0"	0
4	MONTHLY TOTAL	0.00
5	2019-2020	0.4

BAROMETER

6	MAXIMUM	30.34
6A	DATE	1 st & 15 th
7	MINIMUM	29.71
7A	DATE	Jun-23
8	AVE. MONTHLY PRESSURE	30.00
CWA	NWS COUNTY WARNING AREA	Henrico

JUNE TEMPERATURE & WIND GRAPH



RICHMOND'S JUNE TEMPERATURE & PRECIPITATION GRAPH

